

MAINTENANCE

OVERVIEW

To ensure your generator set operates at maximum efficiency, it's essential that you perform maintenance periodically. This section suggests a periodic maintenance schedule for a generator set that runs on standby service. (If you are operating the generator set in hot or dusty conditions, or if you are using it as a regular source of power, contact your distributor or dealer for an appropriate maintenance schedule.)

This section is broken into the following segments:

- ❑ ***General Inspection***
- ❑ ***Air Circulation***
- ❑ ***Battery***
- ❑ ***Cooling System***
- ❑ ***Engine***
- ❑ ***Fuel System***
- ❑ ***Maintenance Schedule***
(a handy quick-reference tool)

To help you keep track of important details that will help you with maintenance, keep these tips in mind:

- ❑ Maintain a log that details maintenance performed as well as hours the machine has run.
- ❑ Use the hour meter to track the number of hours the machine has run.



GENERAL INSPECTION

On a daily basis, or after every eight hours of operation, it's important to do a quick inspection of your generator set. Included in the general inspection are the following tasks:

- ❑ Check engine oil level
- ❑ Check engine coolant level
- ❑ Check cooling system for leaks
- ❑ Check exhaust system for leaks
- ❑ Check fuel level
- ❑ Check fuel system for leaks
- ❑ Check for mechanical damage
- ❑ Check battery connections

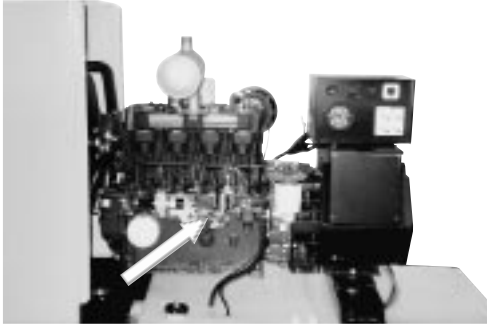
Check Engine Oil Level

Checking the engine oil level is an important part of regular maintenance. To check the oil level, take these steps:

1. Shut off the engine and wait approximately 10 minutes. (This allows the oil time to drain back into the crankcase, which gives you a more accurate reading.)

GENERAL INSPECTION, CONT.

2. Check the oil level on the dipstick. (The oil should be just below the full mark.)



Location of oil dipstick



Checking the engine oil

TROUBLESHOOTING

OVERVIEW

This section contains troubleshooting tips that will help you solve some of the most common problems. Specifically, possible causes and solutions are provided for each of the following situations:

- ❑ *Engine Won't Stop Running*
- ❑ *Engine Won't Crank*
- ❑ *Engine Cranks but Won't Start*
- ❑ *Engine Runs but then Shuts Down*
- ❑ *Engine Lacks Power or Is Unstable*
- ❑ *Engine Lacks Output Voltage*

ENGINE RUNS BUT THEN SHUTS DOWN, CONT.

ES, AS & DS Controls

Applicable only to DS Control.

Possible Cause	Solution
The engine is in over-speed. (The Fault light comes on when the engine shuts down.)	Service as necessary.

Applicable only to DS Control.

The oil pressure is low. (The Fault light comes on when the engine shuts down.)	<ol style="list-style-type: none">1. Check the oil level.2. Repair any oil leaks.3. Fill to proper level.4. Flip the Run-Stop-Auto switch to Stop.5. Restart.
--	---

ENGINE RUNS BUT THEN SHUTS DOWN, CONT.

ES, AS & DS Controls

Possible Cause	Solution
The engine temperature is too high. (The Fault light comes on when the engine shuts down.)	<ol style="list-style-type: none">1. Check the engine coolant level.2. Repair any coolant leaks.3. Refill as necessary.4. Flip the Run-Stop-Auto switch to Stop.5. If coolant temperature exceeds 225°F (101°C), clean and service the entire cooling system as required to restore full cooling capacity.6. Restart.

Applicable only to DS Control.